

AT&T Remote Monitor

MOBILE APPLICATION USER'S GUIDE



The new  **at&t**
Your world. Delivered.™

INTRODUCTION ///

AT&T Remote Monitor provides two solutions for accessing the remote monitoring system via a mobile phone. The choice depends on the capabilities of your particular phone.

The WAP Application will work on almost any Web-enabled phone, but *does not allow live camera viewing*.

The Mobile Application requires you to download a small program to your phone, and *allows live viewing of cameras in your system*. This solution will work on most Java-enabled phones. There may be restrictions imposed by your phone carrier that prevent the Mobile Application from working.

WAP INTERFACE ///

You access the WAP Application through your phone's internet browser. Point the browser to the URL described in your account documentation. It is usually the same URL as your remote account login with **"/mobile/"** added to the end (without the quotes).

LOGIN:

You will be prompted to enter your **UserID** and **Password**. This is the same information that you use on your PC to connect to your remote account. You will see a list of options.

CAMERAS:

Use the **'CAMERAS'** option to see snapshots of the cameras on your system. From here you can refresh the image, adjust settings, or go back to the cameras list.

DEVICES:

By selecting a Device from the list you can view its status or control it remotely.

MACROS:

Selecting this option allows you to execute any of the pre-defined rules in your remote account.

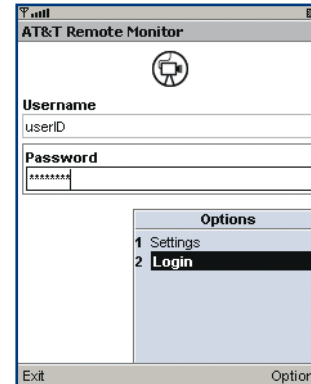
MOBILE APPLICATION (J2ME) ///

The Mobile Application is a small program that you download via an Internet connection on your phone. This program allows you to have access to your remote monitoring system from anywhere you have phone service. To use this application you should have a data plan with your phone account, as the data transfers for live video can be large.

NOTE: In the instructions below, you may notice that the displays do not look exactly the same as what you see on your phone. This is normal, as every phone is a little different.

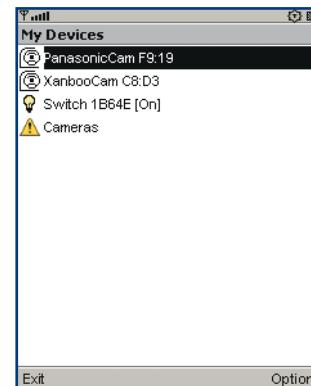
1. **DOWNLOADING:** Start your cell phone browser. Point it to the **Mobile Application URL** in your account documentation. It will usually be the same URL as your account log in page with **"/mobile/j2me/"** added to the end (without the quotes). When prompted, confirm that you wish to download and install the application.

2. **STARTING UP:** Some phones offer to start the application right after you install it. Select **'YES'** to start or go to where your phone stores downloaded applications and select **'AT&T Remote Monitor'**.
3. **LOGGING IN:** You may be prompted to approve the data connection. Enter your account **UserID** and **Password** in the fields provided.

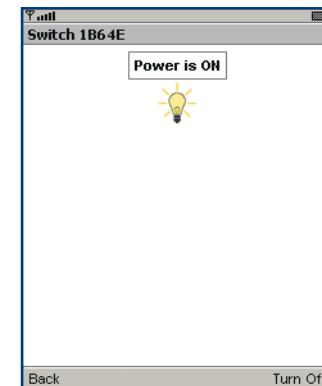


MOBILE LOGIN

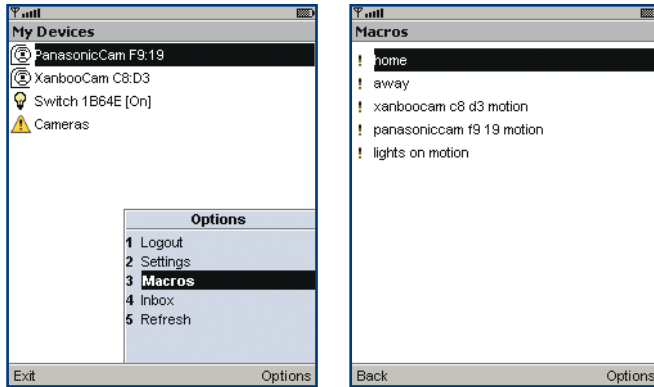
4. **MY DEVICES:** The first screen you see after logging on is the **'MY DEVICES'** page. Here you will see a list of all devices that are connected to your system. Select one of the Devices to view or control it.



MY DEVICES

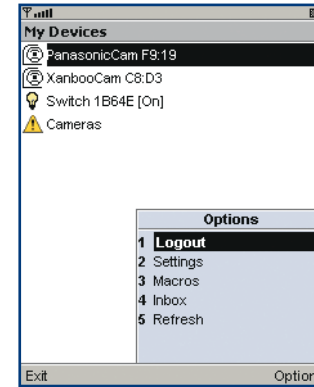


5. **OPTIONS**: Press '**OPTIONS**' to see additional functions that you can access. The ones you will use most often are '**MACROS**' and '**INBOX**'. Inbox allows you to view the Event Archive in your remote account, and **Macros** lets you execute your predefined actions remotely.



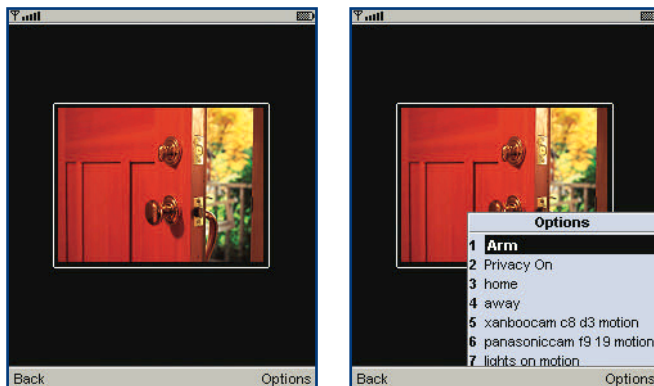
MOBILE OPTIONS

7. **LOGOUT**: Use '**OPTIONS**' to log off the mobile application. If you do not log off the application will continue to be logged in even if you are doing other things with your phone. If you do not log off, you will not have to enter your **UserID** and **Password**, next time.



MOBILE LOGOUT

6. **LIVE VIDEO**: From the **My Devices** page select a camera from the device list. After a short delay, you will be able to see live video from your camera. Using '**OPTIONS**' you can Arm or Disarm the camera motion detection.



LIVE VIDEO